

Call our Technical Help Line
on 0967 624 634

5 STEPS TO MORE SOYBEANS

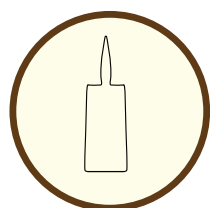
The Syngenta guide to soybean
farming for the Zambian smallholder
farmer

syngenta®

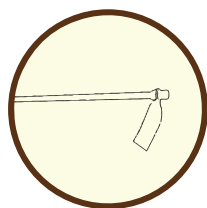
TM

Land preparation

1. You will need one of these:



Chaka hoe or hoe



Ripper

2. After harvest



Rip to 15 cm depth immediately after harvest to prepare the soil for the next season.

3. Rains



Wait for the early showers to bring on weed growth

4. Cleaning up

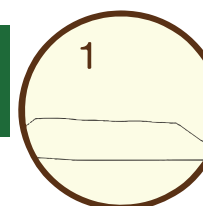


Use Syngenta Touchdown on actively growing weeds as a general clean up before planting.

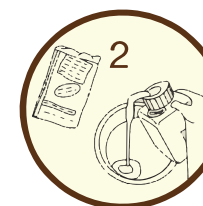
1. Make the investment in quality seeds

Inoculating Soya bean seed. Use certified Soya Bean seed.

Soy Pack (Inoculant and Molly Flo T)



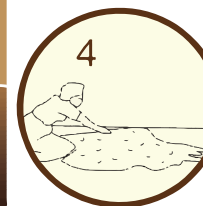
1 Lay out a sheet on the ground in a shaded area and empty your 25 kg bag of soya bean seeds.



2 Wet the seeds(25 Kg) with 100ml of Mollflo. add the inoculant and mix thoroughly to ensure uniform coating.

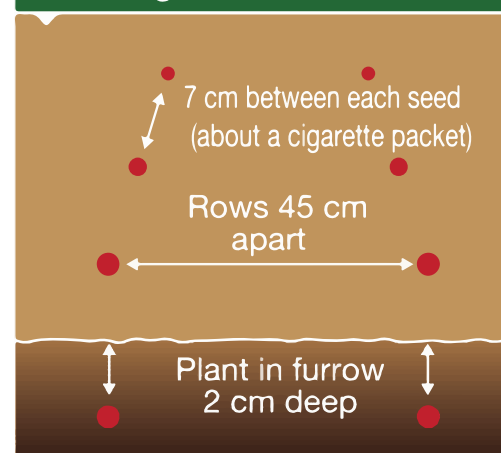


3 Pour the inoculant mixtures over the spread-out seed & mix it well with a shovel.



4 Spread the seeds out on the sheet and allow to dry before planting the same day in moist soil.

Planting for success



syngenta®

2. Always remember soil nutrition

3. Insure against weeds

Seed Treatment



Timing

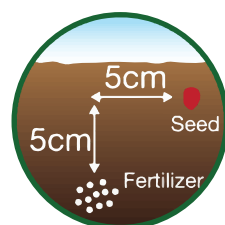
Before planting.

Application:

Old soya bean lands =
1 x 250 g SoyCap Inoculant and
100 ml MollyFlo-T Seed Treatment per
25 kg seedbag.

New soya bean lands =
2 x 250 g SoyCap Inoculant and
100 ml MollyFlo-T Seed Treatment per
25 kg seedbag.

Potassium-rich Fertilizer, such as 5-16-32



Timing:

At planting.

Application:

Bury 5 cm below and 5 cm alongside the seeds, but don't let the fertilizer touch the seed.

Soya Beans Herbicide

Touchdown - Glyphosate



Timing

Pre-planting burndown
7-10 days before planting.

Nozzle: Orange 110



Application:

300 mls /knapsack.
3L per hectare
Spray after emergence of weeds
(total plant burn down, clear the land)

Dual Magnum



Timing

Pre-emergent
immediately after planting.

Nozzle: Blue 110



Application:

100 mls per knapsack.
1L per hectare
Spray immediately after planting your soya

Pre-emergence annual grasses
Suppression of yellow nut sedge

Flex



Timing

Post emergence application
but not later than the
4 leaf stage of the weeds

Nozzle: Blue 110



Application:

100 mls /knapsack.
1L per hectare

Fusilade Forte



Timing

Post emergence application
but not tank mix with Flex
(14 days between
Flex spray)

Nozzle: Blue 110



Application:

100 mls /knapsack.
1L per hectare

syngenta®

4. Zap the pests

Use insecticides like Denim Fit & Ampligo

Kills chewing and sucking pests on a wide variety of crops.

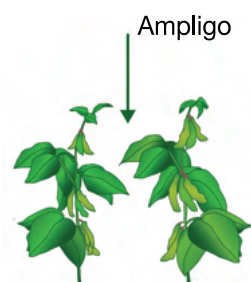


Cutworm



Caterpillar

Ampligo

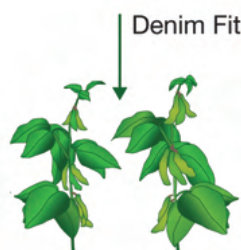


Ampligo
Apply at first sign of infestation
Apply as a foliar spray in
200 - 400 l water / ha for
good coverage

Application:

10 -15ml per knapsack
100-150 ml per hectare.

Denim Fit



Denim Fit
Spray as soon as you see
baby caterpillars.

Application:

10grams per knapsack.
100 grams per hectare

Don't forget to use a good foliar spray. Look out for Voema liquid Fertilizer Range

5. Fight Disease

Use the fungicides Miravis Duo & Amistar Top

Excellent against rust and other diseases.



Rust



Frog Eye



Red Leaf
Blotch

Miravis Duo



Timing

Apply as a preventative
spray application

Application

70 mls per knapsack sprayer
700 ml per hectare

Amistar Top



Timing

Apply at first
signs of disease or at
flowering if no disease is
present and
repeat 14 - 21 days later

Application

50 mls per knapsack sprayer
500 ml per hectare

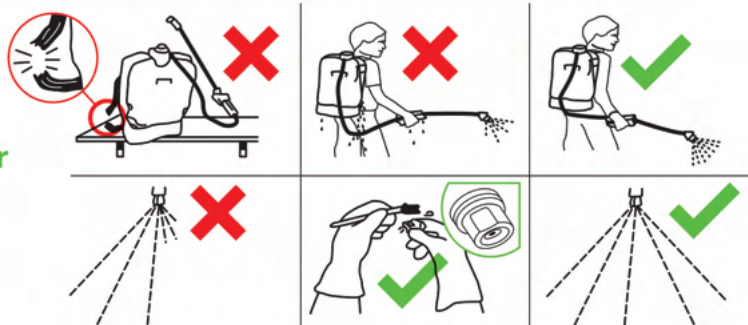
syngenta®

How to use your knapsack sprayer

1

Check sprayer with clean water

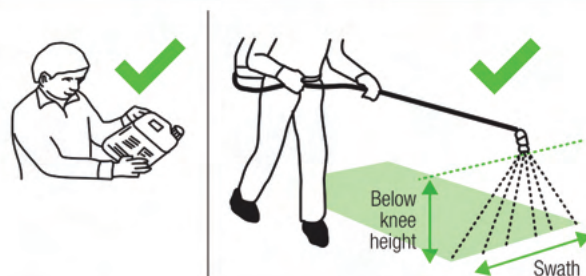
- Check for damage
- Check for leaks
- Check spray pattern
- Check nozzle & filter



2

Calibrate spray output

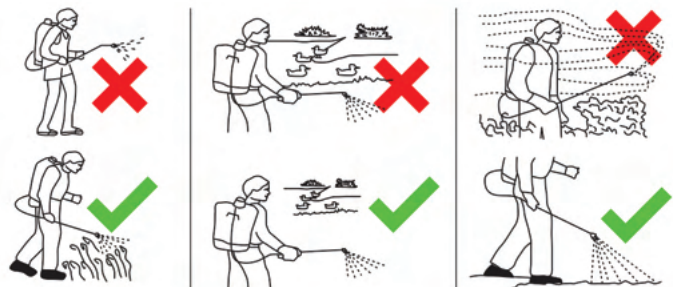
- Read product label
- Follow instructions on bottle
- Fit appropriate nozzle
- Spray 50 cms above target



3

Application

- Use appropriate protective clothing
- Don't use dirty water
- Don't spray when it's windy
- Don't get in ponds and rivers



4

Clean sprayer after use

- Triple rinse the tank
- Pump 1 ltr of clean water through the pipes
- Pour waste water on the ground away from rivers and ponds and people



Use Pesticides Safely and Effectively

Stay safe. Follow the 5 Golden Rules.



Exercise caution at all times

- ✓ Always handle CPPs carefully, avoiding contamination of yourself and the environment.
- ✓ Always clean up spills of CPPs immediately.
- ✓ Keep children, animals and bystanders away when handling CPPs.



Read and understand the product label

- ✓ Always read and understand the product label, or have someone read it to you. If unsure, seek the advice of local field experts.
- ✓ When using CPPs, always comply with your local regulations and laws.



Practice good personal hygiene

- ✓ Always practice good personal hygiene when handling CPPs.
- ✓ Do not eat, drink or smoke while handling CPPs.



Wear appropriate personal protective equipment (PPE)

- ✓ Wear the PPE recommended by the label or applicable local requirements when handling CPPs. Products with different toxicity level require different PPE.
- ✓ Wear protective gloves (e.g. nitrile and other non-absorbent materials) whenever you handle CPPs.



Take care of and maintain application equipment

- ✓ Regularly maintain your spraying and drilling equipment so that it works effectively and does not leak.

syngenta®



CONTACT US ON WHATSAPP

+260 967624634



www.facebook.com/SyngentaZambia



www.syngenta.co.zm



sales.zambia@syngenta.com

syngenta[®]

SYNGENTA ZAMBIA

Plot 5255, Mukwa Road, P.O.Box 33088, Heavy industrial area, Lusaka, Zambia

TM

